

SOLUS TA11

ALL-SEASON COMFORT, LONG-LASTING VALUE

Class: Touring All-Season

An exceptionally comfortable all-season performance tire, with a tread optimized for wet traction and a compound engineered to last. The rounded shoulder design keeps a continual contact with the road for excellent cornering and tight, responsive steering on the highway.

BENEFITS & TECHNOLOGY

- Engineered for class-leading comfort and shock absorption with Kumho's exclusive Escot casing
- Excellent fuel economy and a long tread life — the result of a dual silicone compound engineered to cool quickly. It runs colder, lasts longer, and improves fuel efficiency
- Exceptional grip and stability in heavy rain and snow. Four, deep center grooves channel water away quickly
- Engineered for traction on ice, with tiny waffle creating thousands of small gripping edges



Tread Classification: Asymmetric | UTQG 600 A/B, 700 A/B | T RATED

PERFORMANCE RATINGS

DRY	7
WET	8
NOISE	8.5
WEAR	10
COMFORT	9
SNOW	8
OFF-ROAD	N/A

Numeric ratings reflect how a tire compares to other Kumho tires of similar type. A rating of 10 indicates that the tire is designed to perform extremely well under those conditions. A rating less than 4 or N/A (not applicable) indicates that the tire is not designed to excel in that area. 10 = Extremely Well, 5 = Acceptable, 1 = Poor.

SAMPLE VEHICLES

Ford Focus; Honda Accord; Hyundai Sonata; Lincoln Town Car; Mazda 6; Toyota Camry, Corolla, Sienna

COMPARABLE COMPETITOR PRODUCTS

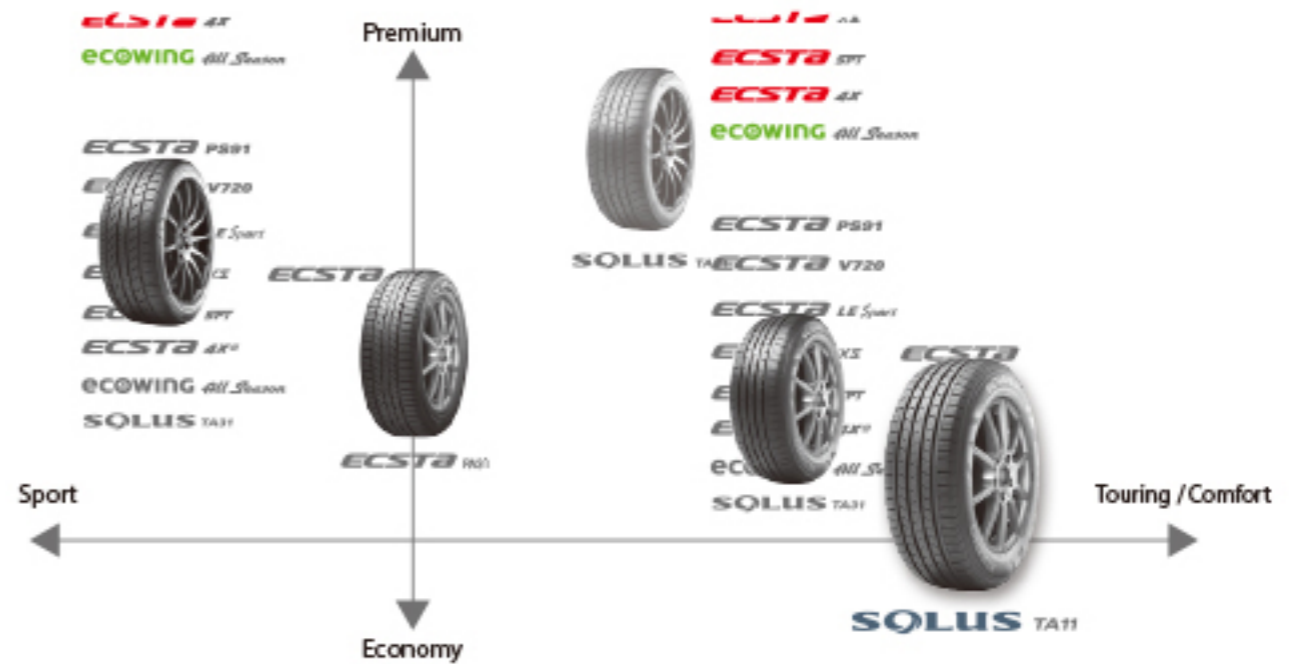
Goodyear Assurance A/S; Michelin Defender T + H; Pirelli P4 Four Seasons; General Altimax RT43

Available tire sizes on next page.



SOLUS TA11 Highlights & Positioning Map

- Wide range of all-season versatility
- 75,000 Miles Warranty
- Road Hazard Protection
- Improved wet road safety
- UTQG 700 A/B (T Rated)



I Corresponding Design



- Custom design to match the class of your vehicle

II Excellent Mileage



- Even wear due to a wider tread design and new compound technology

III Wet Road Safety



- Application of high dispersion micro silica to improve the performance in wet conditions

Performance Ratings

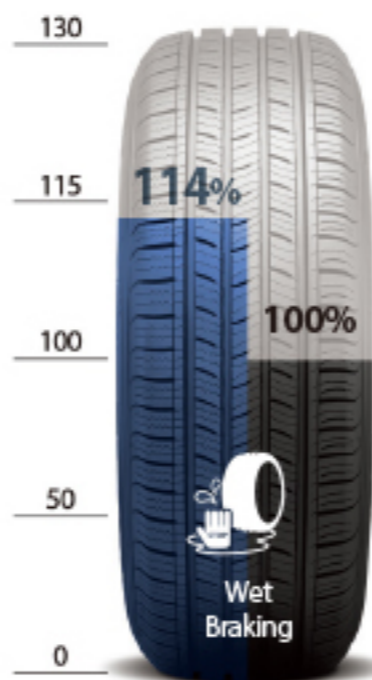
※ Test product (size), Test vehicle : 215/60 R16, BMW 328i



: **SOLUS TA11**



: Existing product of the Company

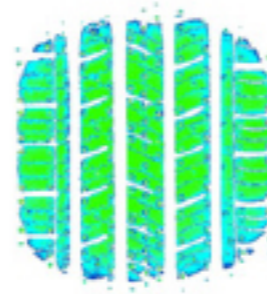


Tread Benefits & Technology

(A) Designed for uniform, rigid ground contact pressure

Performance balance tuning obtained by securing uniform ground contact pressure with the application of an i-PES pattern drawing system

[**SOLUS** TA11 Foot Print] ▶



(B) Snow Sipe

Application of wave sipes to reinforce wet/snow performance

(C) Reinforce durability

Improved high speed durability due to a gum edge designed to prevent steel belt flow



(D) Sidewall Design

Designed to portray a smooth and comfortable driving unit



(E) Mileage Upgrade

Improved treadwear and mileage through even block splits

(F) Wide 4 + 2 Channels

Improved drainage based on the design of four broad horizontal grooves and two smaller vertical grooves

